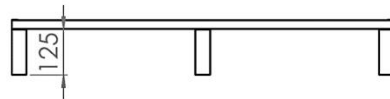
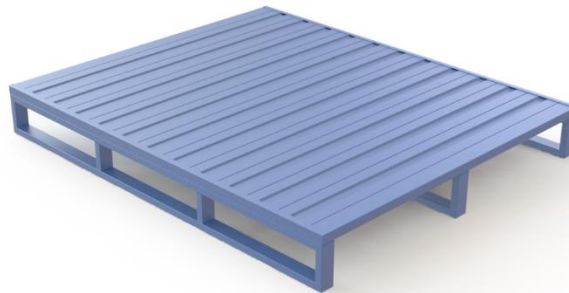
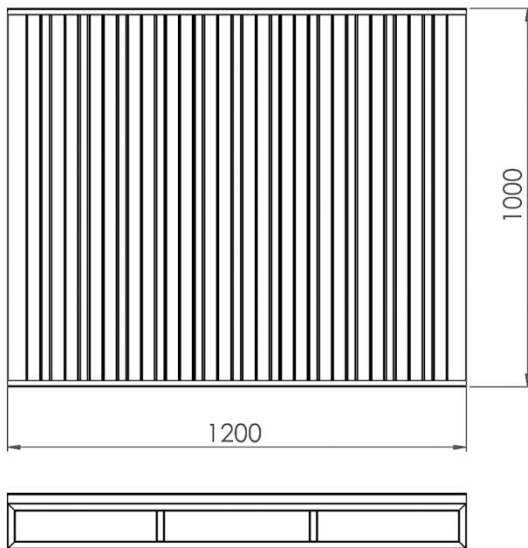


General Information

HEAVY DUTY Corrugated Top Steel Pallets are designed for extremely heavy loading and harsh conditions. Their corrugated and welded design with powder/epoxy coating finish promises high strength and long-life.

HEAVY DUTY Corrugated Top Steel Pallets (Weight:**31.3kg**) are manufactured with hot-rolled tubes and corrugated profiles. They are MIG welded and have strong profiles. They can be accessed from **all the 4 sides**. They are **powder/epoxy coated, repairable, resistant against fatigue, durable, rackable and stackable**.



Design Features/ Dimensions (+/- 3 mm)

HEAVY DUTY Corrugated Top 4-Way Steel Pallets

- Can be accessed using forklifts and stackers.
- Have hollow tubes at the front and tail end of the pallet to reduce damage from frequent loading & unloading.
- Have no free/open edges.
- Is Customizable; Number of top decks can be increased/decreased based on requirement.

Dynamic Load: **2500kg/5500lbs**; Static Load: **5000kg/11000lbs**; Racking Load: **2000kg/4400lbs**